

University Profile



Agriculture University, Jodhpur
Jodhpur-342 304 Rajasthan



Agriculture University, Jodhpur

The Agriculture University, Jodhpur has been established in September 14, 2013 vide Act No. 21 of 2013 to focus on producing highly competent educated human resources in agriculture and allied sciences and upliftment of the economy of farming community by the Government of Rajasthan. The University has the priority of enhancing income of farmers through crop & horticultural production, livestock production and to provide lifetime employability. The territorial jurisdiction of University covers six districts (Jodhpur, Barmer, Nagaur, Pali, Jalore and Sirohi), constituting 28% of total geographical area which sustains about 20.8% human and 28.4% animal population of the State.

The Agriculture University, Jodhpur is having strong teaching, research and extension setup to envisage agricultural development in the western parts of Rajasthan through its different units viz. three Agricultural Colleges, one Institute for Diploma in Agriculture (IDA), two Agricultural Research Stations (ARS), three Agricultural Research Sub-Stations (ARSS) and six Krishi Vigyan Kendras (KVKs). The University is also guiding extension functionaries at the State and National level for development of agriculture and allied sectors and transfer the agricultural technologies to the farmers and end users.

The annual precipitation of this area ranges between 100-600 mm. The six districts of Rajasthan which fall technically under three agro-climatic zones are as under:

- I A: Arid Western Plains – Jodhpur and Barmer district.
- II A: Transitional Plain of Inland Drainage - Nagaur district.
- II B: Transitional Plain of Luni Basin- Pali, Jalore and Sirohi districts.

Geographical information of University

S. N. Particular	Rajasthan	AU, Jodhpur	% Share
1. Area (ha)			
Geographical	342.2	96.5	28.2
Kharif	164.6	54.7	33.2
Rabi	100.9	18.9	18.7
2. Population (2011)	6.86 crores	1.45 crores	21.1
3. Livestock (2012)	5.77 crores	1.69 crores	29.3

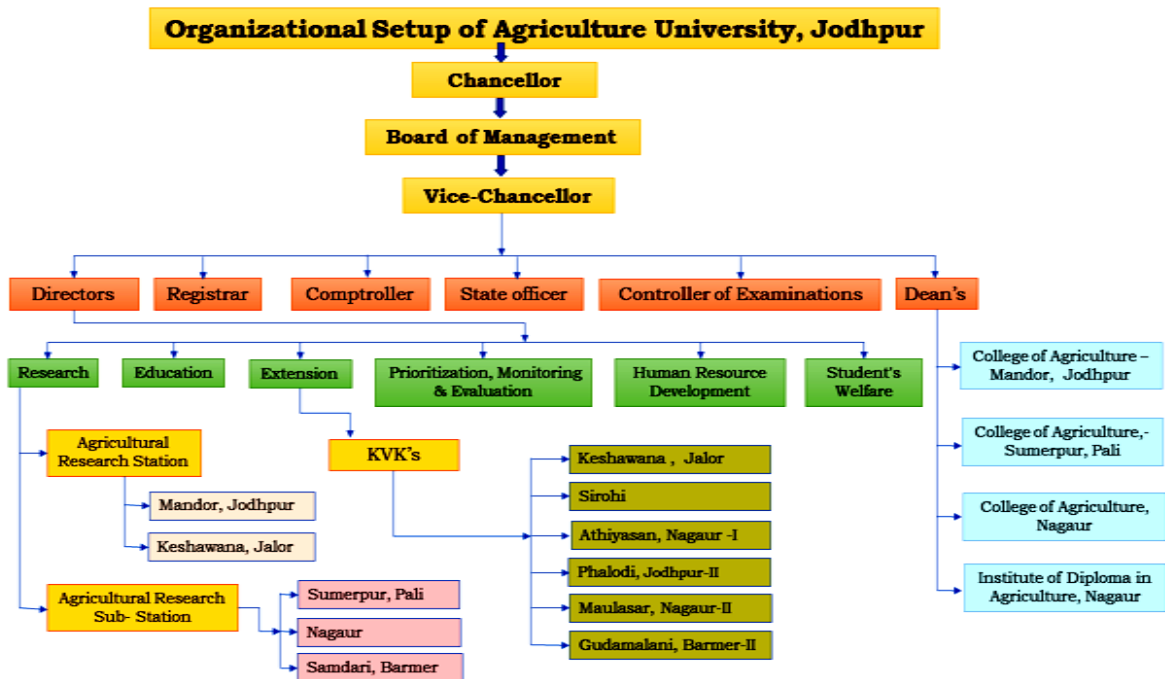
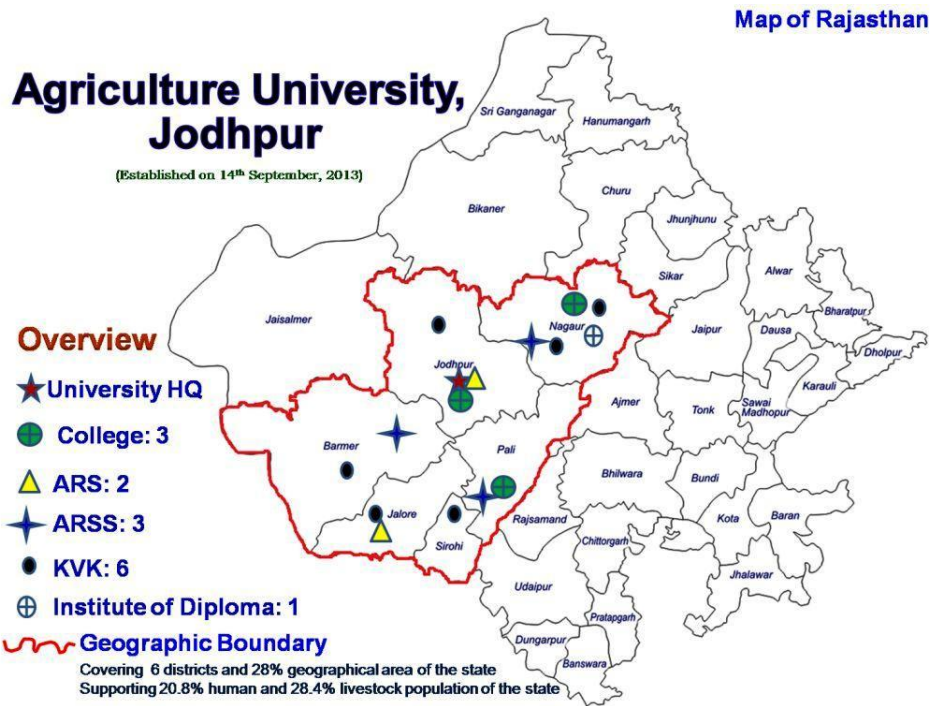
The University is accredited by the National Agricultural Education Accreditation Board, ICAR, New Delhi. After accreditation the University has received Innovative Grant by the ICAR through National Agricultural Higher Education Project for development of infrastructure and human resource.

Location:

The headquarter of Agriculture University, Jodhpur is located at Jodhpur city. It is 10 kms away from main railway station and 13 kms away from airport on NH 65 towards Nagaur and Bikaner. The distance of University headquarter is 335 kms from State capital Jaipur.

Objective of the University:

- Making provision for imparting education in different branches of study, particularly Agriculture, Horticulture, Fisheries, Forestry, Agricultural Engineering, Home Science, basic science and other allied branches of learning and scholarship.
- Furthering the advancement of learning and conducting of research, particularly in agriculture and other allied sciences.
- Undertaking the extension education of such sciences and technologies specially for the rural people of the State; and
- Such other objects as the University may from time to time determine.



Education:

Education in the University shall include Bachelor's, Master's and Doctoral degree programmes in Agriculture and applied Science. Educational programmes are based on modern

system of agricultural education with the objective of producing competent and practically oriented graduates and post-graduates to handle production, research, extension and teaching work in the field of agriculture and allied sciences.



College of Agriculture, Jodhpur: This college was established on 31st July, 2012 as a constituent college of Swami Keshwanand Rajasthan Agriculture University, Bikaner. After declaration of Agriculture University, Jodhpur, as separate University, it is now under the jurisdiction of Agriculture University, Jodhpur since 14th September, 2013.



Programs and Courses

Name of programme	Total seats
B.Sc. (Hons.) Agriculture	60
M.Sc. (Ag.) Agronomy	4
M.Sc. (Ag.) Genetics and Plant Breeding	4
M.Sc. (Ag.) Horticulture	4
M.Sc. (Ag.) Plant Pathology	4
M.Sc. (Ag.) Entomology	4
M.Sc. (Ag.) Extension education	4
Ph.D. Agronomy	2+1*
Ph.D. Genetics and Plant Breeding	2+1*
Ph.D. Horticulture	2+1*

* In-service candidate quota



College of Agriculture, Sumerpur: This college was established on 4th August, 2012 under Swami Keshwanand Rajasthan Agricultural University (SKRAU), Bikaner to address the issue of shortage of trained manpower (Human Resource) in the discipline of agriculture in the region. Since September 14, 2013, College of Agriculture, Sumerpur became a constituent part of Agriculture University, Jodhpur. The B.Sc. (Hons.) Agriculture degree programme is running with 60 seats in each batch.



College of Agriculture, Nagaur: The college was established in 2015 under Agriculture University, Jodhpur on the highway towards Bikaner. B.Sc.(Hons.) Agriculture with 60 seats per batch and Post-graduation in Food Science & Technology with two seats in each batch are ongoing. College has modern building and other basic infrastructure facility. The Institute of Diploma in Agriculture is shifted from Ladanu to College campus.

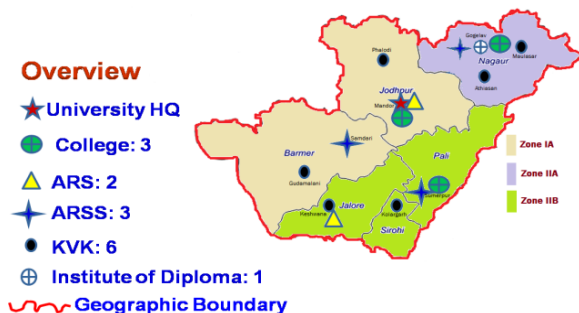


**Research:**

The University has an important research mandate for generating scientific technology and development of improved crop varieties through a network of All India Coordinated Research Projects (AICRPs) of the ICAR, operating at different research stations. There are three AICRPs, one All India Network Project, one Centrally sponsored long term project on seed spices, four voluntary centres and six seed hubs. Beside these, five Ad-hoc projects and 12 externally funded projects including ICAR/RKVY projects are also operative. RKVY has significantly contributed for strengthening of research capabilities and infrastructures.

The research is carried out through two Agricultural Research Stations located at Mandor, Jodhpur and Keshwana, Jalore and three Agricultural Research Sub-Stations located at Sumerpur (Pali), Samdari (Barmer) and Nagaur. The Colleges are also contributing in research through Ad-hoc projects and PG students' research. The University research is guided, monitored and administered by Directorate of Research, headed by Director (Research) who is assisted by Additional Director Research (Seeds) at the University headquarter, Zonal Director Research at Agricultural Research Stations and Officer In-charges at Agriculture Research Sub-Stations. Organization and functions of the Directorate of Research are outlined as under.

AGRICULTURE UNIVERSITY, JODHPUR
(Established on 14th September, 2013)

**Research Stations:**

Agricultural Research Station, Mandor, Jodhpur: this station was shifted from ARS, Sumerpur to Mandor in 1983 and located 10 kms away from Jodhpur railway station on NH 65 towards Nagaur and Bikaner.



Agricultural Research Station, Keshwana, Jalore: It was established in 1988 under National Agriculture Research Project (NARP) funded by ICAR, New Delhi. It is situated on the way from Jalore to Barmer at about 17 km distance from Jalore town and about 168 kms away from Jodhpur and 420 kms from State capital, Jaipur. The site is located at latitude 25°23.115' and longitude of 72°30.726'E, elevation 149.9 msl. The Zone IIB lies in south-west corner of Rajasthan.



Agricultural Research Sub-Station, Sumerpur (Pali): This sub-station was established in 1972 under ARS, Keshwana with a research land of 41.70 ha. This station having facilities of irrigation by Jawai canal and also have well developed orchards of horticultural crop.



Agricultural Research Sub-Station, Nagaur: This sub-station was established in 1993 under ARS, Mandor, Jodhpur on the highway towards Bikaner. testing and seed production of pearl



millet, green gram, sesame etc is carried out by this station.



Agricultural Research Sub-Station, Samdari:

It was established in 1998 in Arid Western Plain Zone (1A) of Rajasthan. It is situated near main railway station from Jodhpur to Barmer tract and Bhiladi; it is about 129 kms from Barmer district headquarter and 80 kms from Jodhpur. It is the voluntary center for testing pearl millet and moth bean.



Salient Research Accomplishments

The research achievements of the University are reflected in some of the notable achievements:



Screening of germplasms of cumin

Crop Improvement: A total 25 varieties have been developed by different units of the University, out of which 8 varieties in sesame, three in pearl millet, two in grain amaranth, moth bean, isabgol, and one each in castor, chilli,

cluster bean, cumin, groundnut, kulthi and tumba. After establishment as new University, a total 07 varieties have been developed. The details of varieties developed are given below:

Table: Varieties developed at University

Crop	Variety	Total (Nos)
Sesame	RT 46, RT 54, RT 103, RT 125, RT 127, RT 346, RT 351, RT 372	8
Pearl millet	MCB 2, MPMH 17, MPMH 21	3
Grain Amaranth	RMA 4, RMA 7	2
Castor	RHC 1, MCI 8 (identified)	2
Chilli	RCh 1	1
Moth bean	RMO 40, IPCMO 880	2
Cluster bean	RGM 112	1
Cumin	RZ 209 (collaborative)	1
Groundnut	TBG 39 in collaboration with BARC & SKRAU	1
Isabgol	RI 1, RI 89	2
Kulthi	KS 2	1
Tumba	RMT 59	1
Total		25



Seed production field of pearl millet



Evaluation of breeding material of Isabgol

**Agricultural Extension:**

The Directorate of Extension Education (DEE) is constituent unit of Agriculture University, Jodhpur, entrusted with the responsibility of promotion of agricultural development in the state through quick transfer of technology by providing training, farm advisory services and information to extension personnel's of the line departments and farmers. The KVKs have been given mandate to provide training to the farmers, extension functionaries and demonstrate the improved technology both "on" and "off" farm. For enhancing the process of transfer of technology, ICAR has established Krishi Vigyan Kendras (KVK's) in each district of the state out of which six KVKs are falling in the jurisdiction of University under DEE.

Krishi Vigyan Kendra, Sirohi: It is an extension based grass root level institute established on 1989 by the ICAR to promote latest technical knowledge in agriculture and allied fields. KVK is situated 8 kms away from District Headquarter on National Highway 14 towards Pali.



Krishi Vigyan Kendra, Keshwana, Jalore: It is functioning since July, 1985. This KVK is enriched with all basic facilities like building, farmer's hostels, demonstration units, soil testing lab, plant health clinic with 62 hectare instructional farm. The KVK is contributing the technology for pomegranate production in the region.

**Krishi Vigyan Kendra, Athiyasan, Nagaur-I:**

It was established in the September 1992. This KVK is situated at Village Athiyasan, seven kms away from Nagaur city on Ajmer road and linked with National Highway 89. The KVK is having seed hub of pulses.

**Krishi Vigyan Kendra, Phalodi, Jodhpur II:**

It was established on April 12, 2012 as KVK Jodhpur-II under jurisdiction of Agriculture University, Jodhpur. It is located in Phalodi Tehsil of Jodhpur District on Mohra village road. This KVK is doing excellent in transfer of technologies in the region.

**Krishi Vigyan Kendra, Gudamalani, Barmer-II:**

This KVK established in 2012 by ICAR, New Delhi at Gudamalani in Barmer district of Rajasthan for speedy transfer of technology to the farmers' fields of arid areas. The KVK is doing best in soil and water testing and have excellent technologies on pomegranate production.



**Krishi Vigyan Kendra, Maulasar, Nagaur-II:**

The KVK, Maulasar (Nagaur-II) was established on 2012 at village Maulasar which is 120 km away from district head quarter on Dhankoli-Dabda road with the acquisition of 20.0 ha land.

**Other Services:**

Seed production: the University is producing quality seed production to farmers to enhance the income. It is one of the major resource generation programme of the University. The major seed production is done for pearl millet, sesame, mung bean, moth bean, cluster bean, groundnut, cumin, isabgol, chilli, mustard, taramira, fennel, fenugreek, castor, wheat etc.

Seed Hub: Six seed hubs are functioning at different units of AU, Jodhpur by ICAR for enhancement and production of improved seeds of different crops.

Phyto-sanitary Laboratory: At ARS, Mandor, there is a model laboratory, established to analyze agro commodities.

Soil & Water Testing Laboratory: Laboratories for analysis of soil, water and plant samples of field experiments are also functional at different units of the University.

Plant Health Clinic: Plant health clinics are established at ARS, Mandor; KVK, Jalore and KVK, Sirohi under NHM for diagnosis of plant samples to provide remedial measures to farmers.

Meteorological unit: All research units of the University have well established Agro meteorological units. Agro-met Advisory units is under process with the support of Indian Meteorological Department, Pune.

Challenges:

- Low rainfall pattern and high temperature in the region coupled with high wind velocity are causing aridity in the region which led to highly unfavorable environment for crop production.
- Undulating land topography, establishment of sand dunes, shallow soil depth and poor soil organic matter in the region limit potential exploitation of land and resources.
- The problems related to climate change viz., high diurnal temperature variation, untimely rains, hailstorms, seasonal shift in duration, increase in mean temperature is putting agriculture at risk in terms of productivity, resources use and profitability.
- Problematic soil and salinity is also the main constraint in different areas of western Rajasthan.
- Saline ground water creating adverse condition for crop production in the area. Declining water resources due to high depletion of ground water for agriculture and low rainfall is creating challengeable situation in an already water scarce region.
- Soils in the canal catchment areas of the region are being further degrading due to secondary salinization by seepage and overuse of water as irrigation.
- High infestation of root-knot and other nematode species and their fast multiplication in the sandy soils are the major problems for successful cultivation of crops both under open field and protected conditions.
- Dwindling livestock populations due to limited fodder availability and decrease in areas under rangelands have created challenging situation for maintaining agricultural sustainability in the region.

Future Thrust:**Teaching:**

- Development of a variety of high quality course programs both at undergraduate and postgraduate levels for all specializations and disciplines.



- Establishment of College of Horticulture & Agroforestry, Dairy & Food Technology, Agricultural Engineering and Agri-Business.
- Setting up of high-tech laboratories with latest equipments to facilitate the students and researchers to reach international standards.
- Development of library and ARIS Centre to facilitate the faculty and students.
- Establishment of virtual classrooms.

Research:

- Development of technologies for 'per drop more crop'.
- Establishment of Centre of Excellence on seed spices, medicinal & aromatic plants, water management and organic farming.
- Development of packages for post harvest management and value addition in different crops.
- Escalation of seed production in different crops and hybrid seed production program in pearl millet.

Extension:

- Establishment of ATIC Centre to facilitate farmers for improved variety seed & planting material with consultancy.
- Establishment of Training Centre and development of e-content and ODL modules for promoting agri-entrepreneurship.

Contact information of officers of the University

S.No.	Name of officers	Designation	Contact Number
1.	Prof. B. R. Choudhary	Vice-Chancellor	0291-2570711
2.	Sh. V.P. Singh	Registrar	0291-2570710
3.	Sh. M. R. Bishnoi	Comptroller	0291-2570710
4.	Dr. S.R. Kumhar	Director Research & Director Education	0291-2572500
5.	Dr. Ishwar Singh	Director Extension	0291-2573008
6.	Dr. B.S. Rajpurohit	Director Prioritization, Monitoring & Evaluation	-
7.	Dr. V.S. Jaitawat	Director HRD & Director Student Welfare	-
8.	Dr. B.S. Bhimawat	Dean & Faculty Chairman, College of Agriculture, Jodhpur	0291-2572565
9.	Dr. S.D. Ratnoo	Dean, College of Agriculture, Sumerpur	02933-258776
10.	Dr. M.K. Poonia	Dean, College of Agriculture, Nagaur	01582-247525
11.	Dr. M. M. Sundria	Controller of Examinations	-

Photo galleries:



Contact Us:

Agriculture University, Jodhpur

Mandor, Jodhpur - 342304

Phone : +91-291-2570711

Website: aujodhpur.ac.in

Email -

Vice Chancellor's Office: vcunivag@gmail.com

Registrar Office: registraraujdp@gmail.com

Comptroller office: comptrollerfin@gmail.com

Year of publication: January, 2020

Editors: Dr. B.S. Rajpurohit, Dr. S.R. Kumhar, Dr. M. M. Kumawat and Dr. Dama Ram